

NAOS

AGAINST FIXED IDEAS

UpTown

ISTRUZIONI DI MONTAGGIO
ASSEMBLY INSTRUCTIONS
MONTAGE ANLEITUNG

AVEC MOUVEMENT - WITH MOVEMENT - CON MOVIMENTO

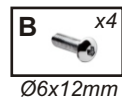


FIG.I

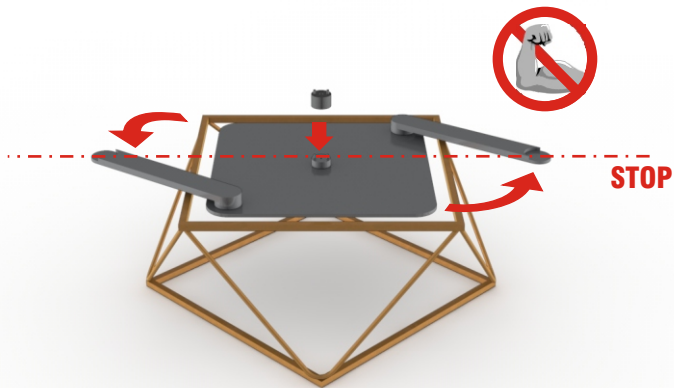


FIG.II

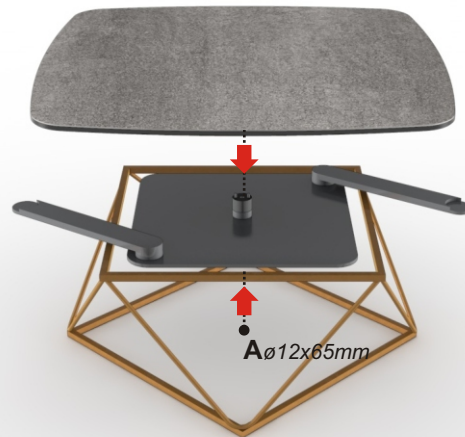


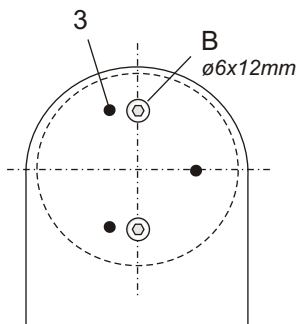
FIG.III



FIG.IV



FIG.V



- ATTENZIONE:** ESEGUIRE LE OPERAZIONI SOTTOINDICATE SOLO SE IL PIANO DI CRISTALLO NON DOVESSE RISULTARE ORIZZONTALE.
- NEL CASO IN CUI IL PIANO DI CRISTALLO NON DOVESSE RISULTARE ORIZZONTALE, RIPRISTINARE LE CONDIZIONI OTTIMALI AGENDO SULLE APPOSITE VITI DI REGISTRO 3 POSTE ACCANTO ALLE VITI DI FISSAGGIO B Ø6x12mm, PER ESEGUIRE TALE OPERAZIONE USARE LA CHIAVE ABRUGOLA n.3 FORNITA A CORREDO. (FIG.V)

ATTENTION: EXECUTE THE FOLLOWING OPERATIONS ONLY IF THE GLASSTOP DOESN'T RESULT IN THE HORIZONTAL LINE.

- IF THE GLASSTOP DOESN'T RESULT IN THE HORIZONTAL LINE YOU HAVE TO REINSTATE THE OPTIMAL CONDITIONS ACTING ON THE PROVIDED REGISTERSCREWS 3 PLACED NEAR THE SETSCREWS B Ø6x12mm . TO EXECUTE THIS OPERATION USE THE VALVE SEAT WRENCH n.3 YOU FIND IN THE EQUIPPED KIT. (FIG.V)

ACHTUNG: FOLGENDE ANWEISUNGEN GELTEN NUR DANN WENN DIE GLASPLATTEN NICHT WAAGRECHT SIND.

- FALLS DIE GLASPLATTEN NICHT WAAGRECHT SIND, DIE OPTIMALEN KONDITIONEN WIEDERERSTELLEN INDEM SIE AUF DIE DAFUER VORGEGEHENEN REGISTRIRSCHRAUBEN 3 EINWIRKEN, WELCHE SICH NEBEN DEN FIXIERSCHRAUBEN B Ø6x12mm BEFINDEN. FUER DIESE AUSFUEHRUNG DIE IMBUSSCHRAUBE n.3 ANWENDEN. (FIG.V)

ATTENTION SVP: LES OPERATIONS SUIVANTES DOIVENT ETRE EFFECTUEES SEULEMENT SI LE PLATEAU N'EST PAS BIEN NIVELE' EN HORIZONTAL.

- SI LE PLATEAU N'EST PAS BIEN NIVELE' EN HORIZONTAL RETOURNER A LA POSITION OPTIMALE EN UTILISANT LES VIS DE REGISTRATION 3 POSITIONNEES A COTE' DES VIS DE FIXAGE B Ø6x12mm .POUR EFFECTUER CETTE OPERATION, UTILISER LA CLE' n.3 (FIG.V)

PLATEAU FIXÉ - GLASSTOP FIXED - CRISTALLO FISSO

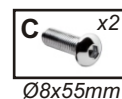


FIG.VI

